

March 2023

Westermo Network Technologies

Robust edge LTE devices

Pierre Oberg

WESTERMO | A Beijer Group
company

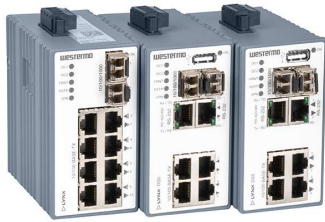
Contents

- Company overview
 - Who we are and what we do
- Solutions to industrial challenges
- Remote access



Westermo Network Technologies

▶ LYNX



Robust and super compact switches

▶ REDFOX



High performance rack mount switches

▶ WOLVERINE



Industrial Ethernet extenders

▶ VIPER



Very robust switches for train networks

▶ IBEX



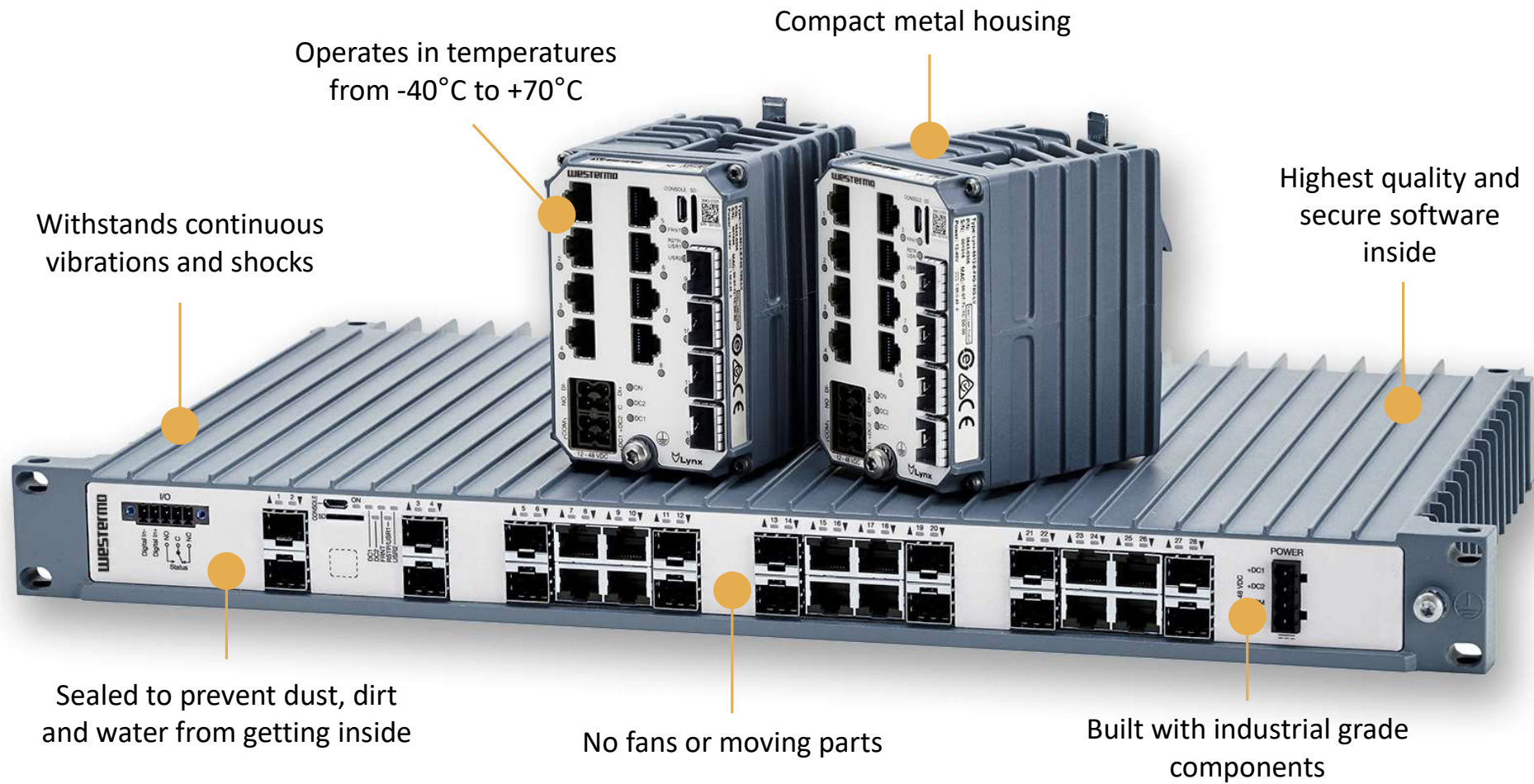
Industrial Wireless WLAN access points and bridges

▶ MERLIN



Secure wireless routing for industrial remote access

Ultra-robust industrial grade hardware



Westermo - What we do

Westermo products and services are used to create networks for control and monitoring systems within the industry and infrastructure



Choose Westermo when operating conditions are tough, and failure is unacceptable



Choose Westermo when you want the highest quality, efficiency and ease of use



Westermo - Company in brief

Founded in
1975

Number of
employees
390

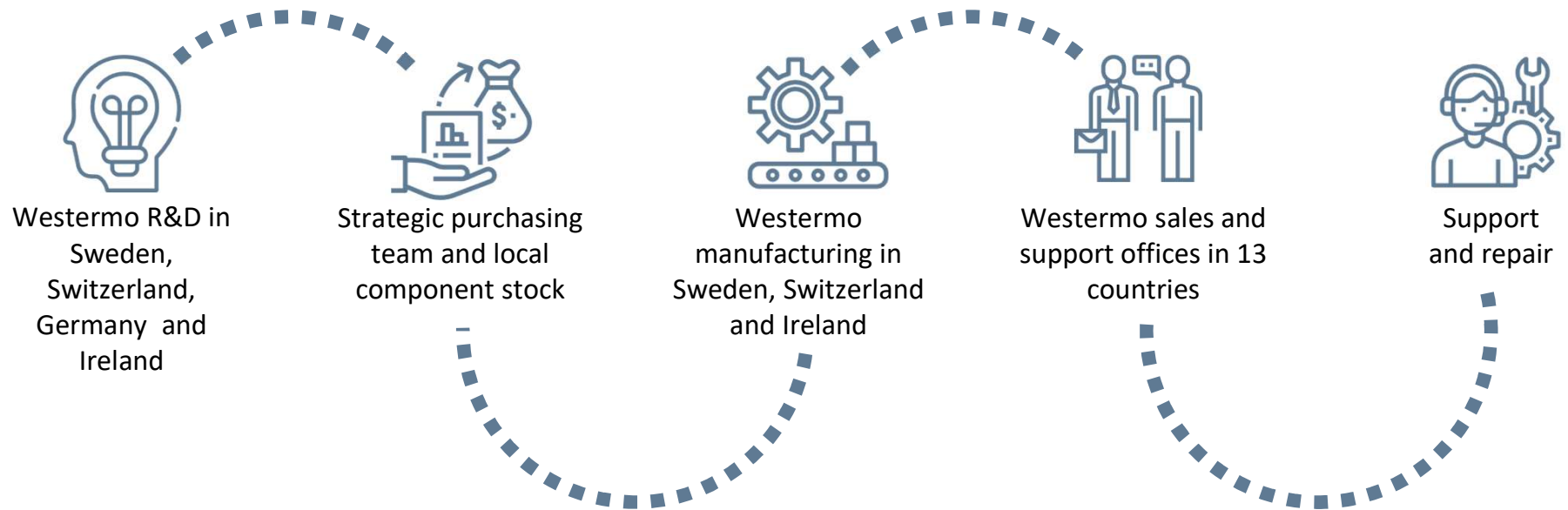
Sales 2022
€95
million

Main
development &
manufacturing
in Sweden

R&D spend
14%



In control of the complete supply chain

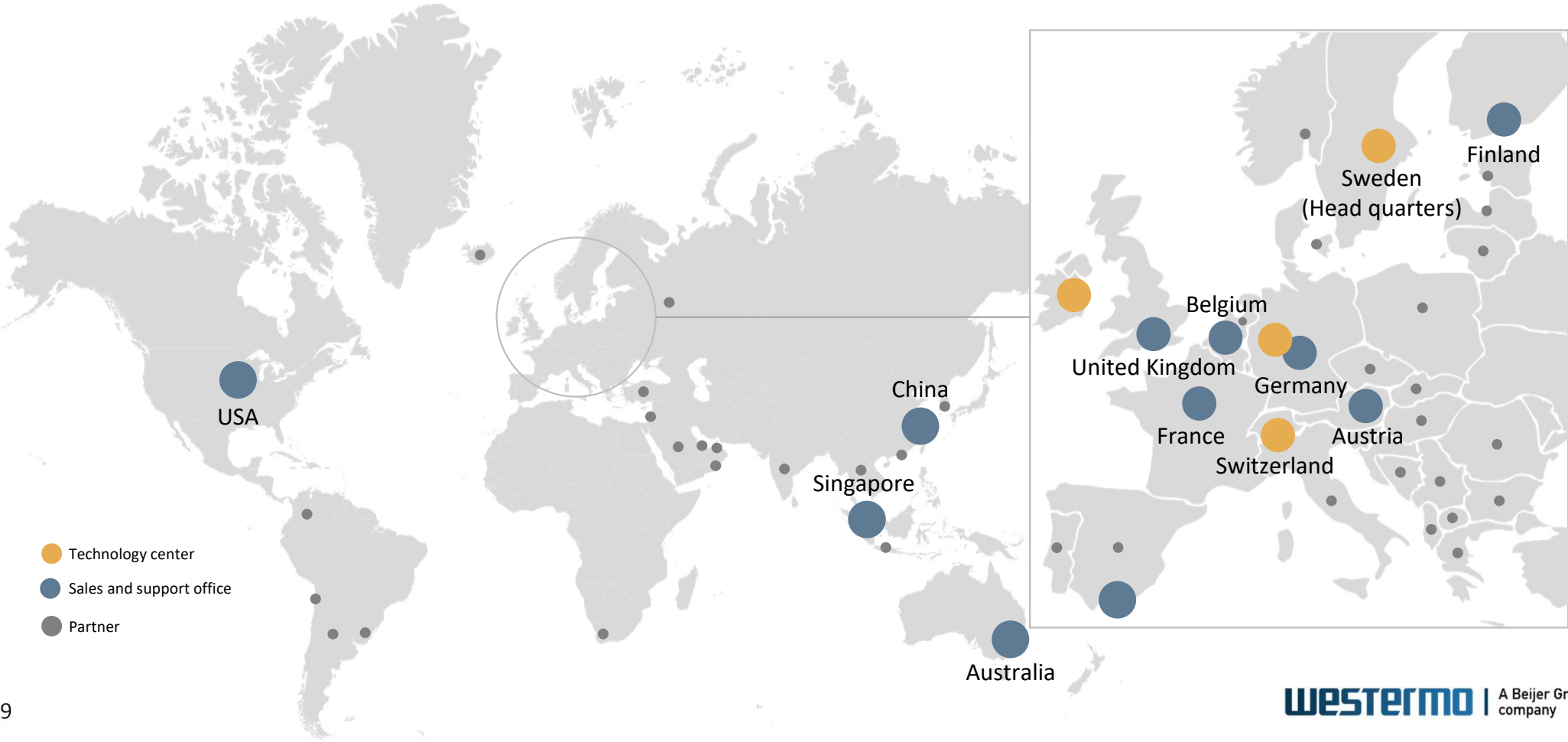


Local presence is key to our growth

- 13 Westermo sales and support offices world-wide
- 46 distribution partners world-wide
- Local language
- Local technical support
- Local sales contact
- Same time zone
- Gateway to Westermo central expertise
- Cultural understanding



World-wide sales and support offices



Westermo Data Communications Ltd

Sales & Technical Support for UK and Ireland

- Based near Southampton + satellite office in Newcastle
- Established 1995
- 13 employees
- Sales Support, Technical Support, Training, Logistics





UK service and support

We are ready and prepared to offer best in class service and support

- Industry expertise
- Business hours technical support hotline
- Onsite troubleshooting, FAT and SAT support
- Cellular network site surveys
- WeOS technology suite
- Standard and bespoke training courses



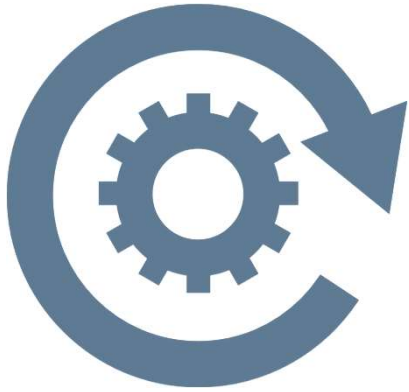
Major Customers in UK





Solutions to industrial challenges

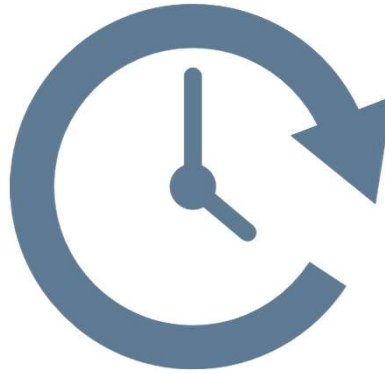
Industrial challenges



Uninterrupted
service 24/7



High level of
cybersecurity



Long operational
life-time



Easy to configure
and maintain

Environmental robustness

- Isolation and transient protection
- Wide temperature range
- EMC immunity to highest levels
- Low power consumption and compact design
- Withstands continuous vibrations and shocks
- All-metal housings and high IP ratings



Uninterrupted
service 24/7

Industrial cybersecurity

In addition to features and protocol support in our network products Westermo provides



Technical expertise



Secure supply chain



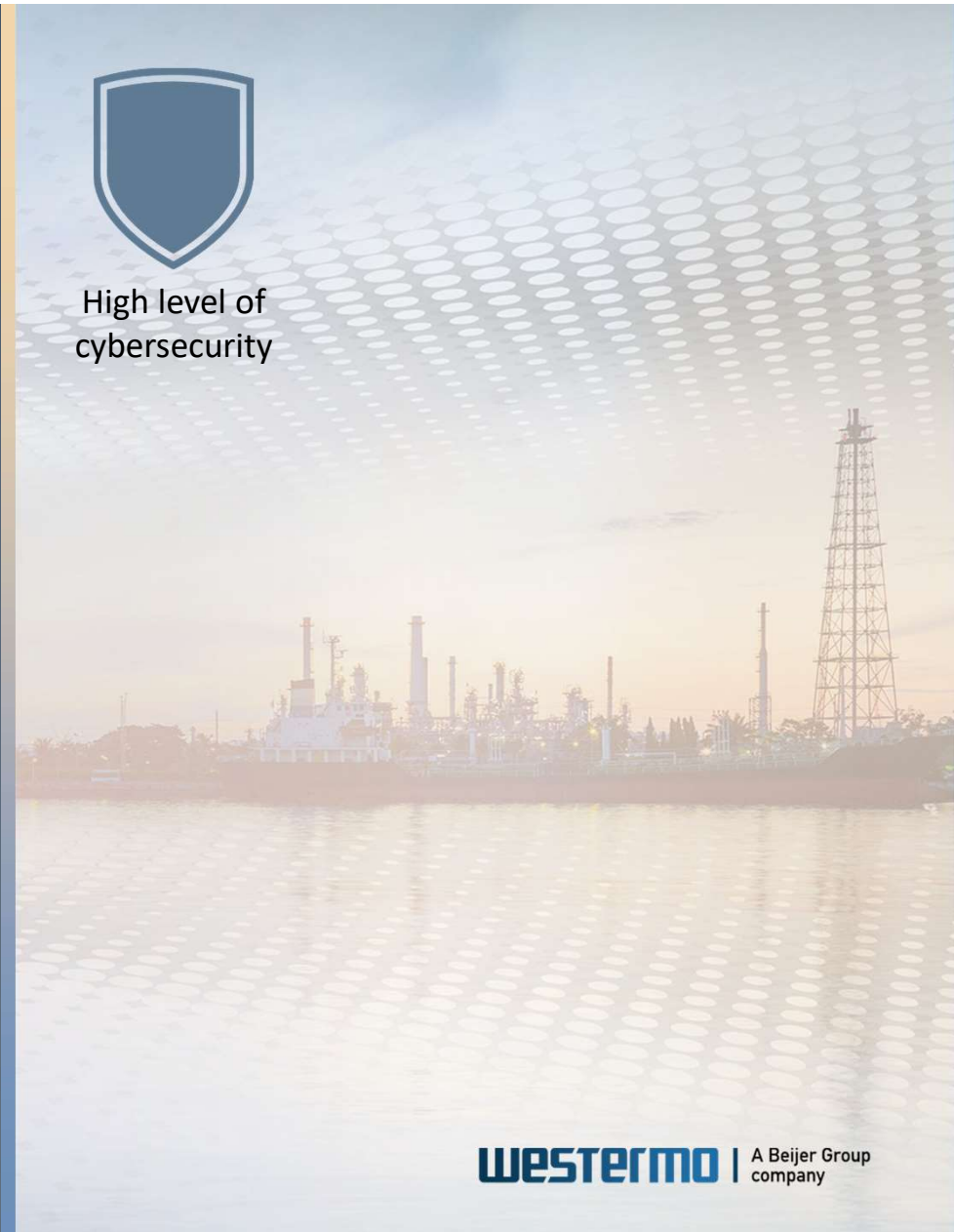
Rapid incident response



Simple network security configuration



High level of cybersecurity

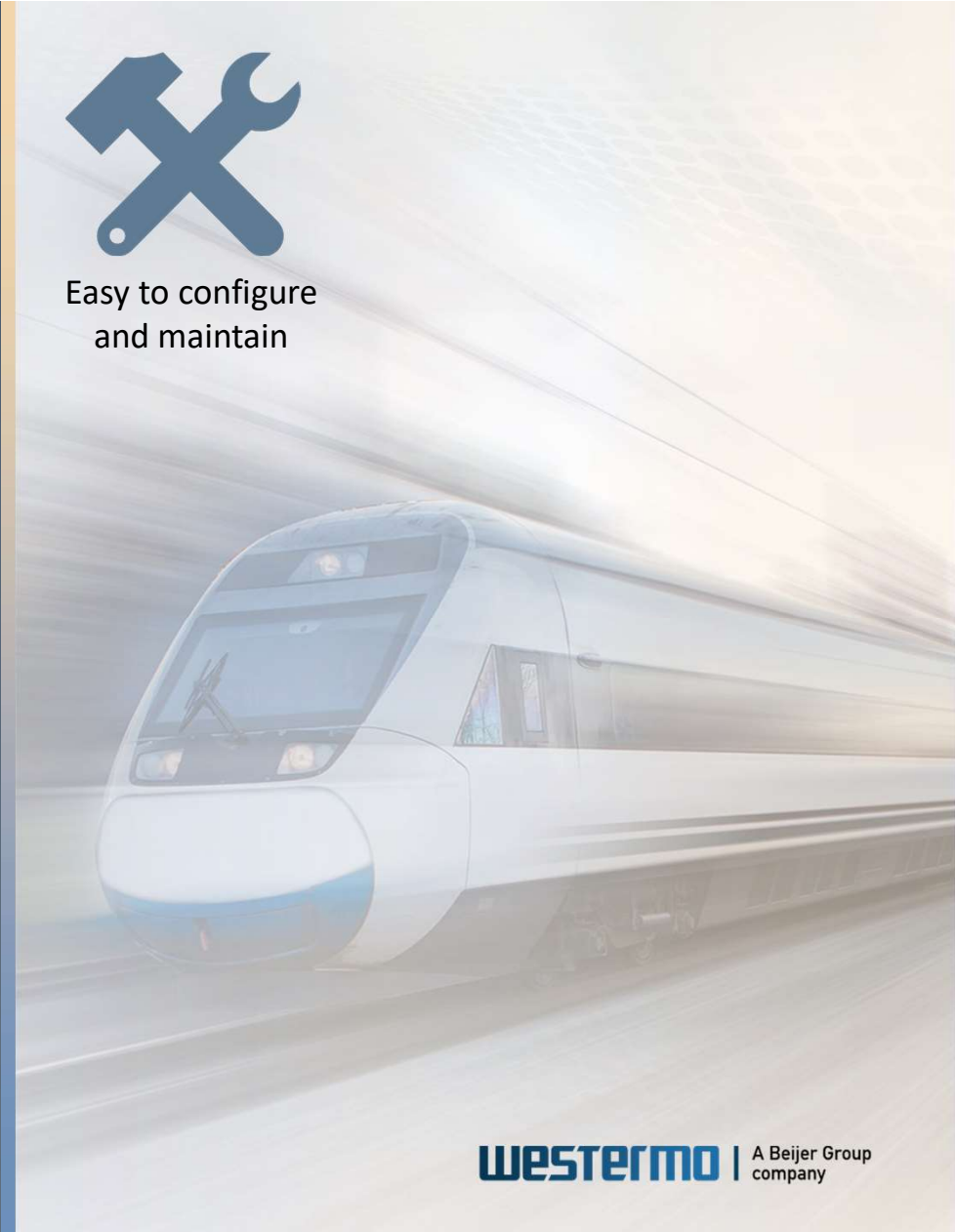


“Made easy”

- Software tools for “Made Easy” network configuration and maintenance
- Over 40 years of market expertise
- Local presence in many countries
- Renowned technical support
- Network Applications Team
- Long term product availability

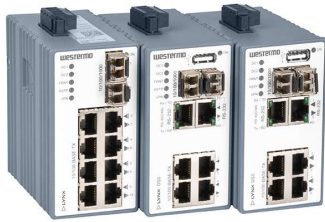


Easy to configure
and maintain



Ultra-reliable network products

▶ LYNX



Robust and super compact switches

▶ REDFOX



High performance rack mount switches

▶ WOLVERINE



Industrial Ethernet extenders

▶ VIPER



Very robust switches for train networks

▶ IBEX



Industrial Wireless WLAN access points and bridges

▶ MERLIN



Secure wireless routing for industrial remote access



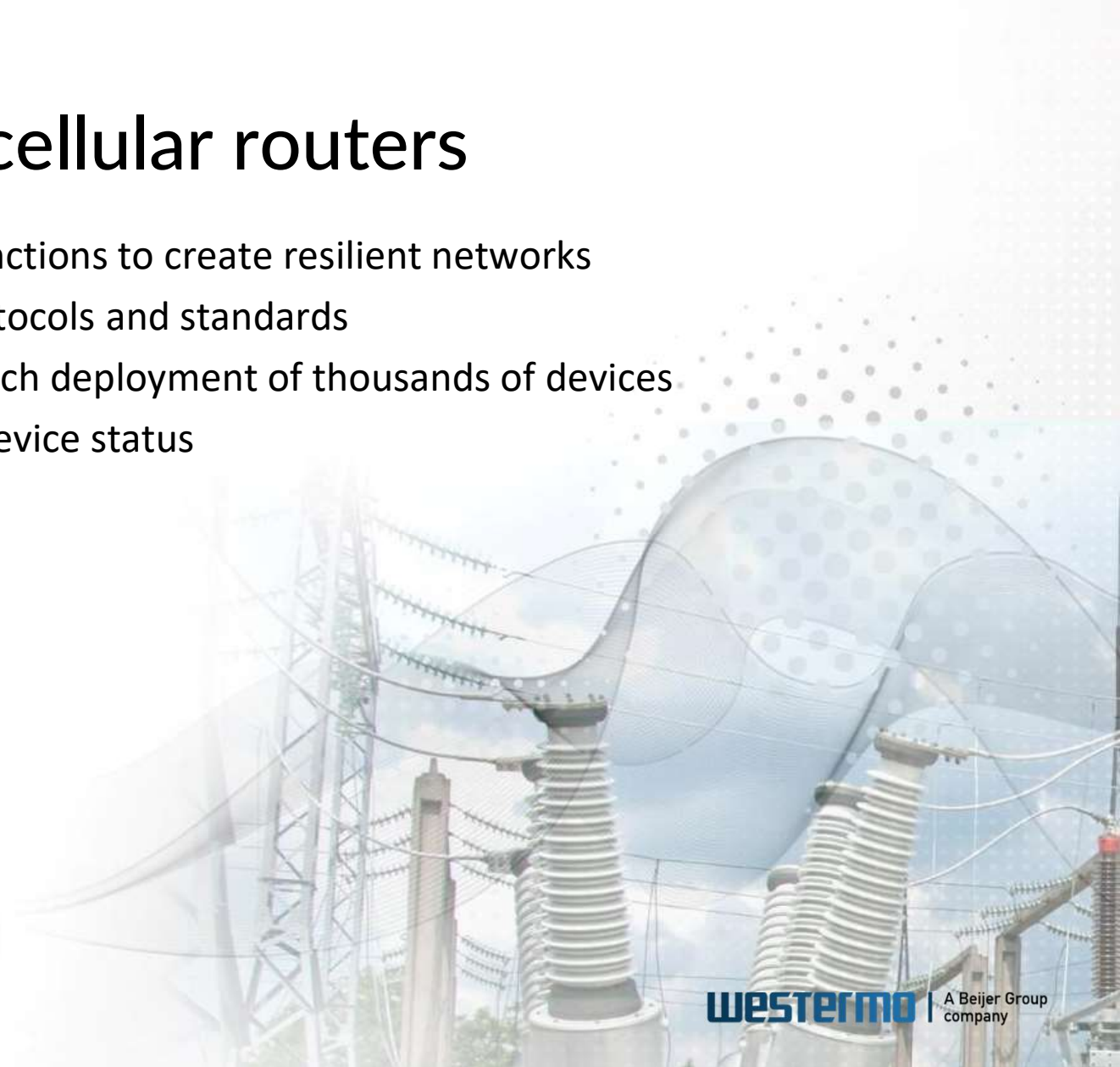
Remote access

LTE edge devices

Substation and IoT cellular routers

- Hardened devices incorporating functions to create resilient networks
- Wide support for cybersecurity protocols and standards
- Software solution allowing zero touch deployment of thousands of devices
- Real-time system monitoring and device status

 **MERLIN**



WESTERMO | A Beijer Group company

Looking back

- 1000s of tele modems installed in the UK
 - TDW-33, TD-36 etc
- 1000s of 3G and 4G routers installed in the UK
 - MRD-350, MRD-455



Going forward - Merlin portfolio

- Merlin 4400 series

Highlights include:

- Cyber security - TPM (Trusted Platform Module)
- Serial protocol conversion

- Merlin 4600 series

In addition to 4400 series:

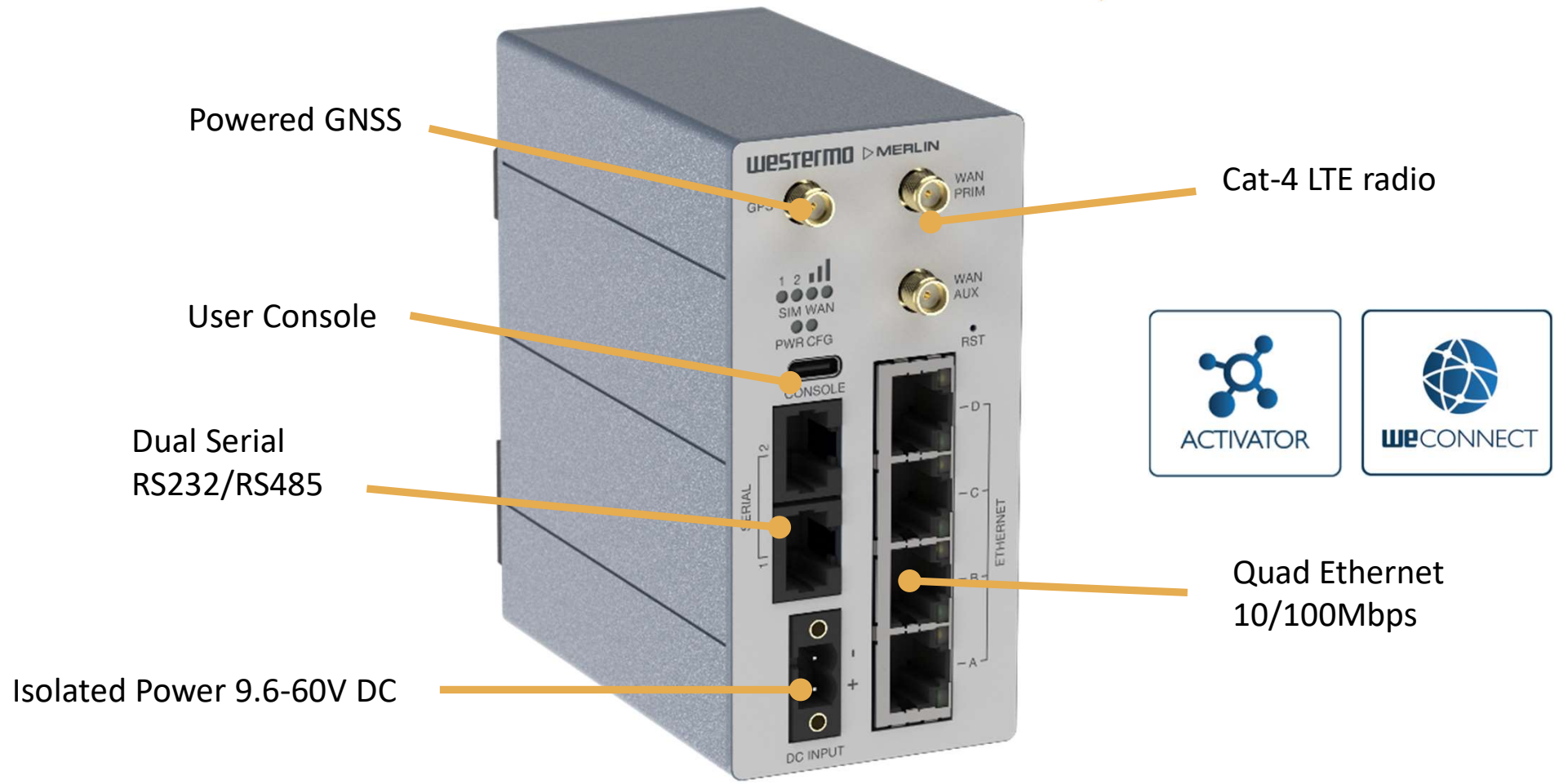
- 61850-3 environmental robustness
 - 4kV port isolation, ESD tested to 6kV contact and 8kV air discharge
 - 500 (!) ms holdup
- Large port count (also including variants with fibre ports, I/O)

- Merlin 4100 series (to be launched shortly)

- Compact, small form factor
- Fewer ports

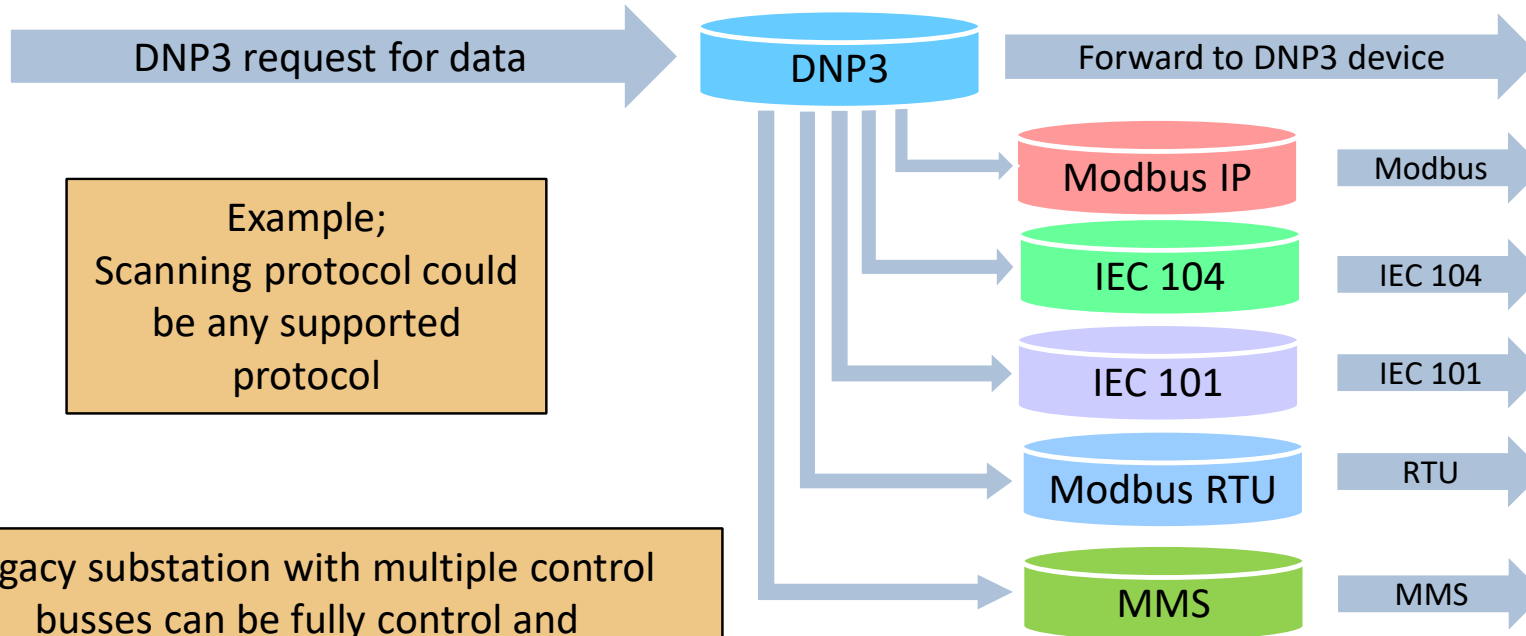
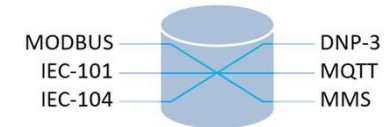


Merlin 4400



SCADA protocol conversion

One common IP address and protocol to address multiple device and protocols

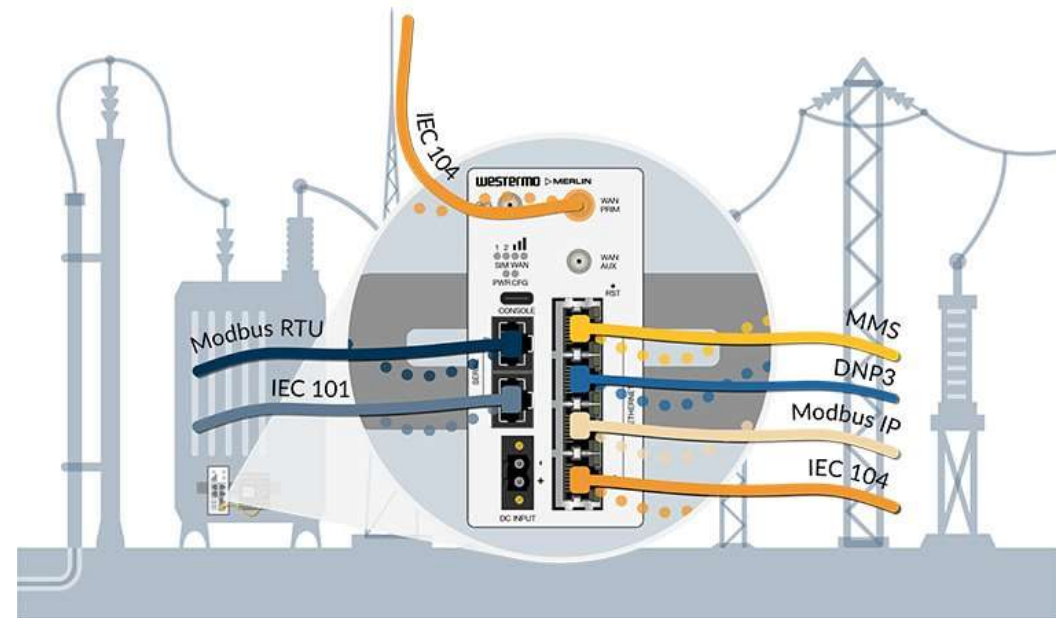


Example;
Scanning protocol could
be any supported
protocol

Legacy substation with multiple control
busses can be fully control and
communicate though one point of presence
on the SCADA system

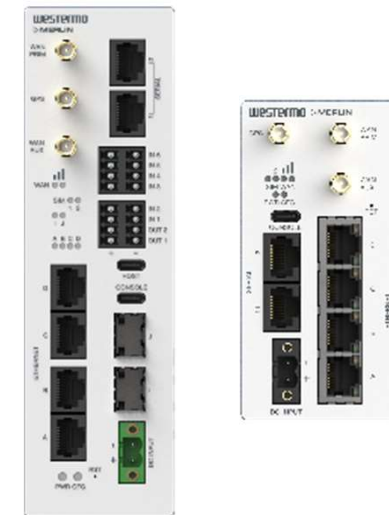
SCADA protocol conversion

- One common protocol towards the SCADA
- Remote site multiple devices and protocols
- Merlin acts as a Master towards devices on site
- Incoming request is mapped to local protocols
- List of supported protocols is growing
- Applications not limited to Energy other industries require protocol translation
- Cost effect solution to integrate existing assets to a common SCADA system



Centralized Management Activator

- Install on premises or on the Cloud
- Cost savings on installations and ongoing management
- Offline configuration
 - Router Templates
 - Quick pages for easy setup of each site
 - Bulk imports CSV & XML files
- Secure Bulk update of devices
 - New firmware
 - Security Policy changes
 - Configuration changes



Easy deployment

- Zero Touch deployment
- Faster site installation time
- Accurate Configuration, software update and patch deployment
- Simplifies deploying and managing thousands of routers
- Secure Bulk update of devices
 - New firmware
 - Security Policy changes
 - Configuration changes



Summary

- Robust LTE edge devices – We have a product portfolio that fits
 - And the other network devices needed to build a complete solution
- Westermo has helped the Utilities through several technology shifts in the past
 - We want to help also this time
 - We are here to help you

WESTERMO

ROBUST INDUSTRIAL DATA COMMUNICATIONS – MADE EASY



Slide 29

US3

End slide

Ulrika Svensson, 2020-04-24



Appendix: Ethernet products

Compact switches and device servers

- Compact industrial Ethernet switch design
- Designed for use in industrial applications
- Robust for long service life
- Unique future proof industrial networking solutions



 **LYNX**

 **weOS**

High end routing performance

- High performance and configurable
- Designed for demanding Edge Network applications
- Robust for long service life
- Unique future proof industrial networking solutions

 **REDFOX**  **WEOS**



Extend far beyond the limits of Ethernet

- Save time and money reusing existing cables
- Designed for use in industrial applications
- Robust for long service life
- Unique future proof industrial networking solutions



 **WOLVERINE**
 **weOS**

Wide range of industrial datacom products



Unmanaged switches



Serial converters and repeaters



Broadband DSL routers



Leased line / PSTN modems



Fibre optic modems



Ethernet media converters

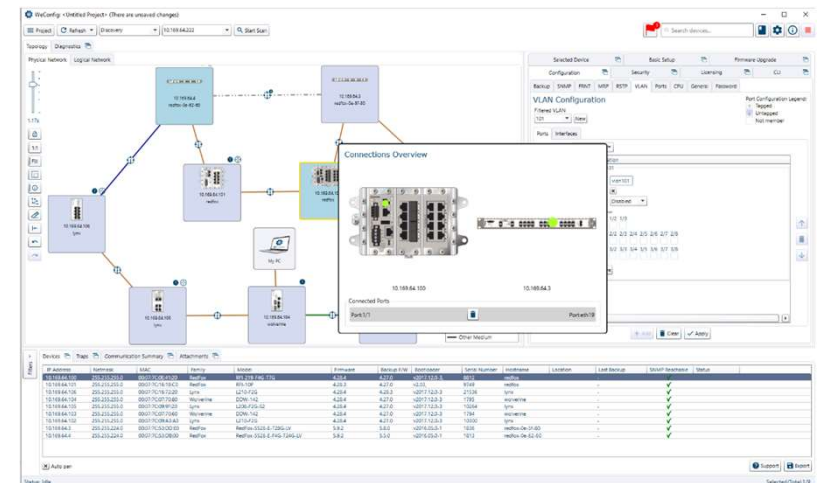
Reliable and versatile software solution

- Same software on all Ethernet switches and extenders
- Continuous software validation ensures the highest quality
- Resilient secure multimedia network solutions
- Simple and flexible configuration



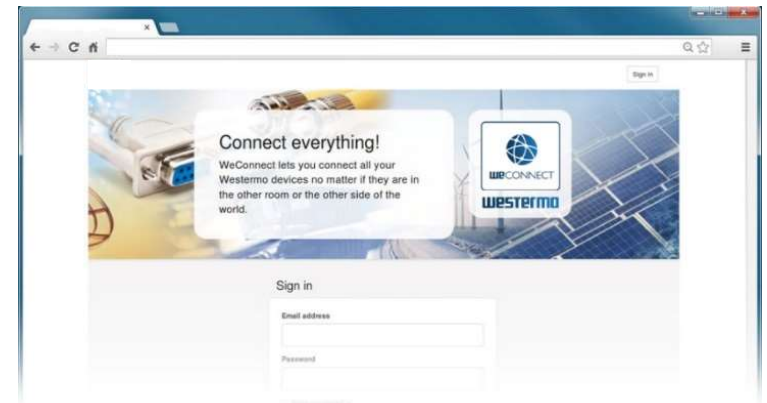
Industrial network configuration tool

- Simplified and rapid network configuration
- Network monitoring and diagnostics
- Easy maintenance of network components
- Network security and overview



Secure remote access to the network edge

- Easily create a secure encrypted network between remote locations
- All that is needed is a connection to the Internet
- Designed to solve common industrial problems
- Reliable connectivity when needed



Summary

Who we are and what we do

- Westermo products are used for creating the most reliable networks possible for critical control systems

Solutions to industrial challenges

- Westermo has specifically developed solutions to meet the extreme requirements for mission critical industrial control systems

The most reliable products on the market

- Westermo products are designed for use in harsh environments and allow you to build cost-effective, reliable, secure industrial networks



WESTERMO

ROBUST INDUSTRIAL DATA COMMUNICATIONS – MADE EASY



US1

End slide

Ulrika Svensson, 2020-04-24